

Market Profile -- West Lawn [65]

Demographic Profile

Total Population in 2010	32,386	Total Households	9,529
Age: 0-17	9,528	African American	597
18-24	4,321	Asian	71
25-44	11,343	Hispanic	5,189
45-64	8,741	Caucasian	3,538
65+	3,267	Other	134
Total Population in 200	32,750	Average Household Size 2010	3.40
Population Density in 2010	10,941	Average Household Size 2000	3.31
Square Mileage	2.96	Family Households	7,354
		One Person Households	1,895

Real Estate

	Median Sale Price 2009	5 Year Price Change	10 Year Price Change	Number of Units Sold 2009
Single Family Detached	\$135,000	-36%	14%	209
Single Family Attached	\$34,500	-62%	-48%	10

Market Scope

Occupied Housing Units 2010	9,529
Rented Housing Units	1,463
Owned Housing Units	8,066
Single Family Units 2010	8,829
Multi-Family Units 2010	647
Occupied Housing Units 2000	9,879
Rented Housing Units	1,804
Owned Housing Units	8,075
Median Household Income 2010	\$53,784
Median Household Income 2000	\$46,989

Real Estate Investment

Total New Purchase Loans (2009)	217
5-Year Loans Total (2005-2009)	3,143
Building Permits (2008)	# of Permits
New Construction Permits	3
Rehab Permits	53

Education

Some High School or less:	8,261
High School	7,359
Some College	4,552
Associate Degree	1,151
Bachelor's Degree	1,781
Master's Degree or higher	865

Workplace Population

Number of Employees, All Industries	9,344
Number of Businesses w/ 1-19 Employees	634
Number of Businesses w/ 20 or More Employees	64
Ratio of Workplace to Residential Population	29%

Transit Information

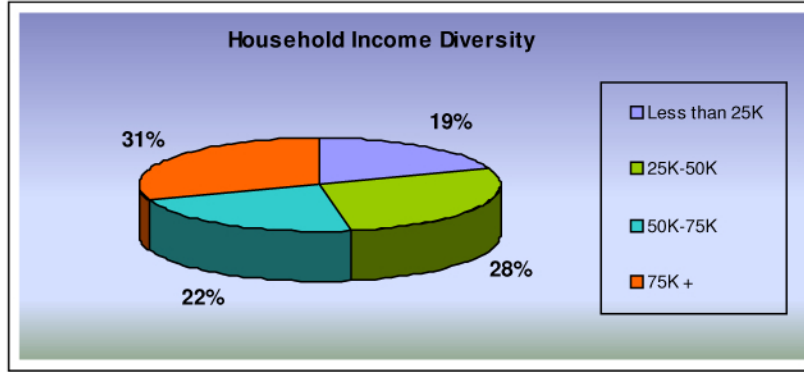
CTA Elevated Train Stops	0
Number of Bus Lines	7

Income and Buying Power

Concentrated Buying Power (\$/sq mile)	\$121,933,587
Conc. Middle Income Households (50-75K) /sq mil	1,248
Conc. Middle Upper Households (50K+) /sq mile	2,234

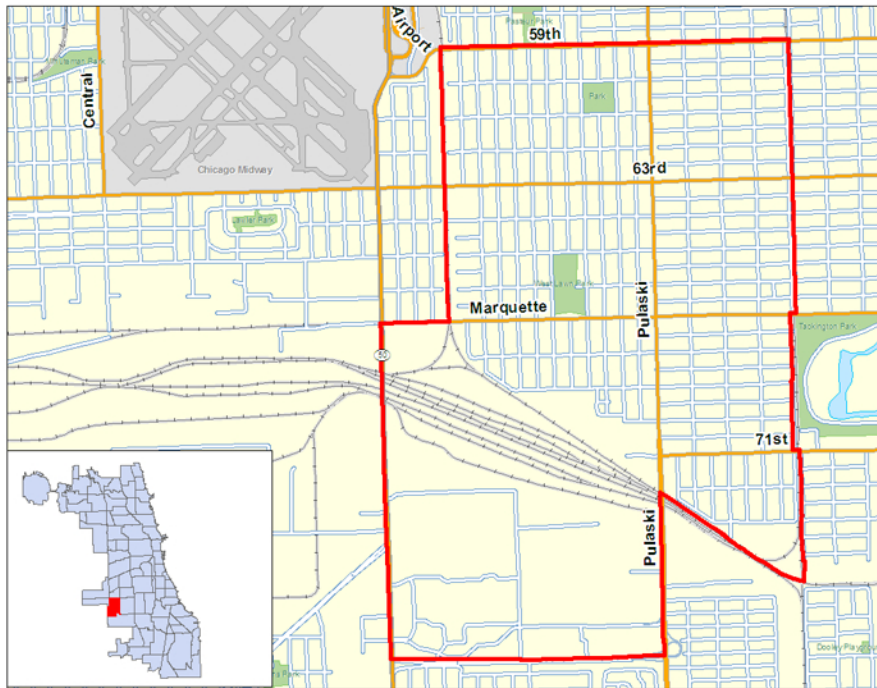
**All data is from 2010 unless otherwise noted.

Market Profile -- West Lawn [65]



Retail Float

Food and Beverage Stores	\$33,598,772	Clothing and Clothing Accessories Stores	(\$45,982,912)
Food Service and Drinking Place	(\$11,213,567)	Furniture and Home Furnishing Stores	\$1,670,728
Health and Personal Care Store	\$2,942,982	Miscellaneous Store Retailers	\$661,007
General Merchandise Stores	(\$216,487,712)	Sporting Goods, Hobby, Book and Music Stores	(\$1,709,270)
Electronics and Appliances Stores	\$2,347,421	Building Material, Garden Equipment and Supply Dealers	(\$1,452,059)



LISC
MetroEDGE

1 N LaSalle St., Suite 1200, Chicago, IL 60602
Phone: 866-828-1599 Email: MetroEdge@lisc.org
<http://metroedge.lisc.org/>



CITY OF CHICAGO
DEPARTMENT OF COMMUNITY DEVELOPMENT
COMMISSIONER

Source: LISC MetroEdge calculations based on data from Claritas (2010), Chicago Association of Realtors, and City of Chicago Building Permits. The accuracy and completeness of the data herein is not guaranteed or warranted, and LISC MetroEdge is not making any express or implied representation or warranty about the fitness of the data and reports for any particular purpose.