

Market Profile -- Gage Park [63]

Demographic Profile

Total Population in 2010	38,473	Total Households	9,319
Age: 0-17	12,930	African American	811
18-24	9,556	Asian	32
25-44	23,443	Hispanic	7,013
45-64	14,025	Caucasian	1,383
65+	2,268	Other	80
Total Population in 200	39,493	Average Household Size 2010	4.11
Population Density in 2010	17,252	Average Household Size 2000	4.01
Square Mileage	2.23	Family Households	7,603
		One Person Households	1,390

Real Estate

	Median Sale Price 2009	5 Year Price Change	10 Year Price Change	Number of Units Sold 2009
Single Family Detached	\$75,000	-59%	-19%	150
Single Family Attached	\$0	-100%		0

Market Scope

Occupied Housing Units 2010	9,319
Rented Housing Units	3,224
Owned Housing Units	6,095
Single Family Units 2010	8,029
Multi-Family Units 2010	846
Occupied Housing Units 2000	9,810
Rented Housing Units	3,852
Owned Housing Units	5,958
Median Household Income 2010	\$41,430
Median Household Income 2000	\$36,390

Real Estate Investment

Total New Purchase Loans (2009)	103
5-Year Loans Total (2005-2009)	1,798
Building Permits (2008)	# of Permits
New Construction Permits	16
Rehab Permits	44

Education

Some High School or less:	22,685
High School	10,729
Some College	5,102
Associate Degree	1,286
Bachelor's Degree	1,683
Master's Degree or higher	789

Workplace Population

Number of Employees, All Industries	5,272
Number of Businesses w/ 1-19 Employees	434
Number of Businesses w/ 20 or More Employees	45
Ratio of Workplace to Residential Population	14%

Transit Information

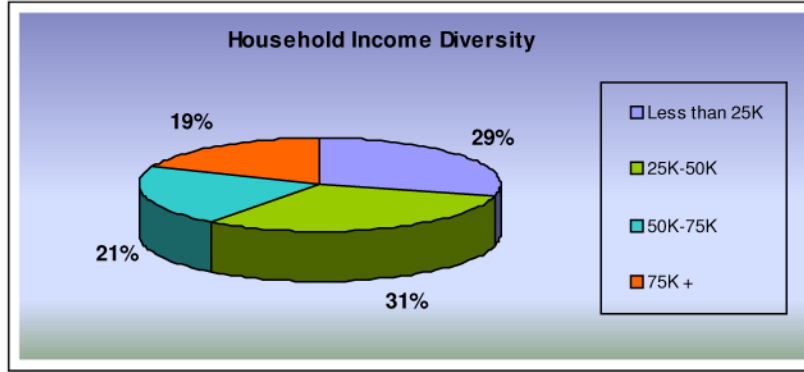
CTA Elevated Train Stops	2
Number of Bus Lines	9

Income and Buying Power

Concentrated Buying Power (\$/sq mile)	\$146,808,422
Conc. Middle Income Households (50-75K) /sq mil	1,619
Conc. Middle Upper Households (50K+) /sq mile	2,409

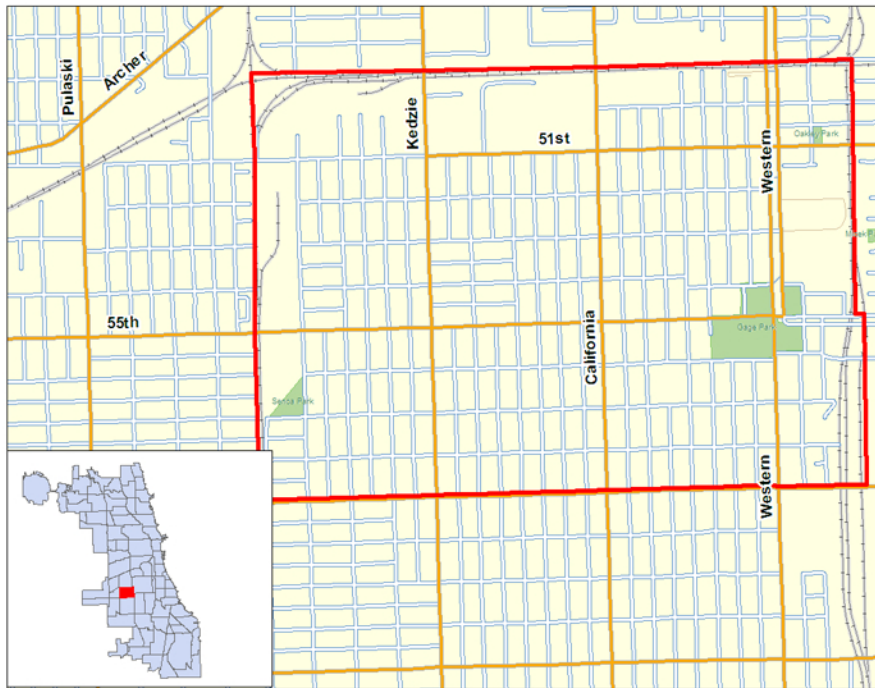
**All data is from 2010 unless otherwise noted.

Market Profile -- Gage Park [63]



Retail Float

Food and Beverage Stores	\$26,233,779	Clothing and Clothing Accessories Stores	\$16,307,136
Food Service and Drinking Place	\$15,626,628	Furniture and Home Furnishing Stores	\$3,078,148
Health and Personal Care Store	\$13,418,699	Miscellaneous Store Retailers	\$1,684,634
General Merchandise Stores	\$24,301,166	Sporting Goods, Hobby, Book and Music Stores	\$5,002,563
Electronics and Appliances Stores	\$6,901,286	Building Material, Garden Equipment and Supply Dealers	\$23,466,476



LISC
MetroEDGE

1 N LaSalle St., Suite 1200, Chicago, IL 60602
Phone: 866-828-1599 Email: MetroEdge@lisc.org
<http://metroedge.lisc.org/>



CITY OF CHICAGO
DEPARTMENT OF COMMUNITY DEVELOPMENT
COMMISSIONER

Source: LISC MetroEdge calculations based on data from Claritas (2010), Chicago Association of Realtors, and City of Chicago Building Permits. The accuracy and completeness of the data herein is not guaranteed or warranted, and LISC MetroEdge is not making any express or implied representation or warranty about the fitness of the data and reports for any particular purpose.