

Market Profile -- Clearing [64]

Demographic Profile

Total Population in 2010	22,382	Total Households	8,672
Age: 0-17	5,203	African American	58
18-24	3,606	Asian	53
25-44	12,382	Hispanic	1,993
45-64	11,828	Caucasian	6,437
65+	3,271	Other	131
Total Population in 200	22,331	Average Household Size 2010	2.58
Population Density in 2010	8,743	Average Household Size 2000	2.58
Square Mileage	2.56	Family Households	5,774
		One Person Households	2,589

Real Estate

	Median Sale Price 2009	5 Year Price Change	10 Year Price Change	Number of Units Sold 2009
Single Family Detached	\$187,500	-18%	44%	141
Single Family Attached	\$154,627	11%	94%	38

Market Scope

Occupied Housing Units 2010	8,672
Rented Housing Units	1,969
Owned Housing Units	6,703
Single Family Units 2010	6,660
Multi-Family Units 2010	1,631
Occupied Housing Units 2000	8,653
Rented Housing Units	2,263
Owned Housing Units	6,390
Median Household Income 2010	\$54,009
Median Household Income 2000	\$46,160

Real Estate Investment

Total New Purchase Loans (2009)	176
5-Year Loans Total (2005-2009)	1,833
Building Permits (2008)	# of Permits
New Construction Permits	20
Rehab Permits	45

Education

Some High School or less:	7,140
High School	11,576
Some College	6,882
Associate Degree	1,580
Bachelor's Degree	2,414
Master's Degree or higher	1,078

Workplace Population

Number of Employees, All Industries	4,661
Number of Businesses w/ 1-19 Employees	409
Number of Businesses w/ 20 or More Employees	59
Ratio of Workplace to Residential Population	21%

Transit Information

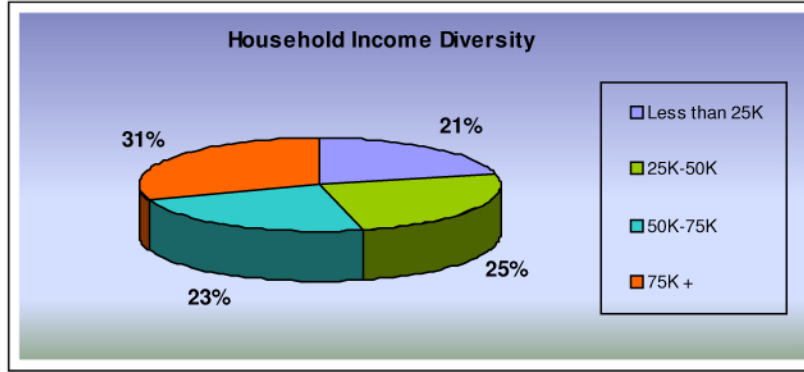
CTA Elevated Train Stops	0
Number of Bus Lines	13

Income and Buying Power

Concentrated Buying Power (\$/sq mile)	\$120,679,601
Conc. Middle Income Households (50-75K) /sq mil	1,314
Conc. Middle Upper Households (50K+) /sq mile	2,348

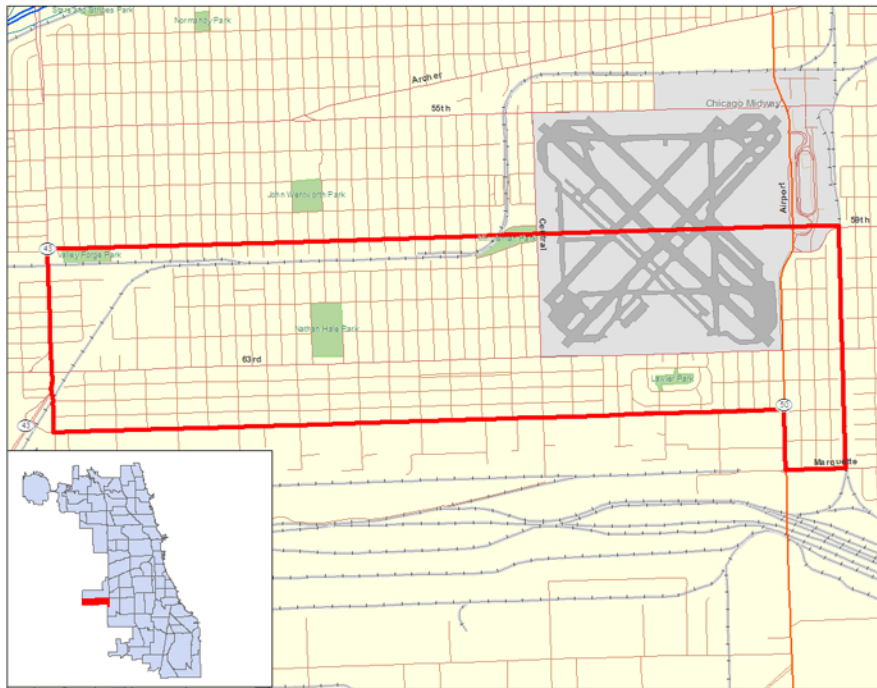
**All data is from 2010 unless otherwise noted.

Market Profile -- Clearing [64]



Retail Float

Food and Beverage Stores	\$17,899,182	Clothing and Clothing Accessories Stores	\$3,842,860
Food Service and Drinking Place	(\$35,666,328)	Furniture and Home Furnishing Stores	\$6,503,928
Health and Personal Care Store	\$12,088,185	Miscellaneous Store Retailers	\$603,405
General Merchandise Stores	\$41,351,576	Sporting Goods, Hobby, Book and Music Stores	\$4,465,759
Electronics and Appliances Stores	\$4,388,184	Building Material, Garden Equipment and Supply Dealers	\$25,719,649



LISC
MetroEDGE

1 N LaSalle St., Suite 1200, Chicago, IL 60602
Phone: 866-828-1599 Email: MetroEdge@lisc.org
<http://metroedge.lisc.org/>



CITY OF CHICAGO
DEPARTMENT OF COMMUNITY DEVELOPMENT
COMMISSIONER

Source: LISC MetroEdge calculations based on data from Claritas (2010), Chicago Association of Realtors, and City of Chicago Building Permits. The accuracy and completeness of the data herein is not guaranteed or warranted, and LISC MetroEdge is not making any express or implied representation or warranty about the fitness of the data and reports for any particular purpose.