

Market Profile -- Chicago Lawn [66]

Demographic Profile

Total Population in 2010	63,206	Total Households	17,165
Age: 0-17	20,599	African American	9,493
18-24	15,295	Asian	89
25-44	35,188	Hispanic	5,236
45-64	26,341	Caucasian	2,116
65+	4,507	Other	231
Total Population in 200	65,328	Average Household Size 2010	3.65
Population Density in 2010	18,268	Average Household Size 2000	3.56
Square Mileage	3.46	Family Households	13,446
		One Person Households	2,962

Real Estate

	Median Sale Price 2009	5 Year Price Change	10 Year Price Change	Number of Units Sold 2009
Single Family Detached	\$47,950	-68%	-44%	332
Single Family Attached	\$63,000	-28%	10%	1

Market Scope

Occupied Housing Units 2010	17,165
Rented Housing Units	7,126
Owned Housing Units	10,039
Single Family Units 2010	13,066
Multi-Family Units 2010	2,830
Occupied Housing Units 2000	18,198
Rented Housing Units	8,391
Owned Housing Units	9,807
Median Household Income 2010	\$42,864
Median Household Income 2000	\$37,353

Real Estate Investment

Total New Purchase Loans (2009)	236
5-Year Loans Total (2005-2009)	4,286
Building Permits (2008)	# of Permits
New Construction Permits	33
Rehab Permits	109

Education

Some High School or less:	24,844
High School	21,235
Some College	14,433
Associate Degree	3,991
Bachelor's Degree	4,588
Master's Degree or higher	2,057

Workplace Population

Number of Employees, All Industries	9,736
Number of Businesses w/ 1-19 Employees	856
Number of Businesses w/ 20 or More Employees	70
Ratio of Workplace to Residential Population	15%

Transit Information

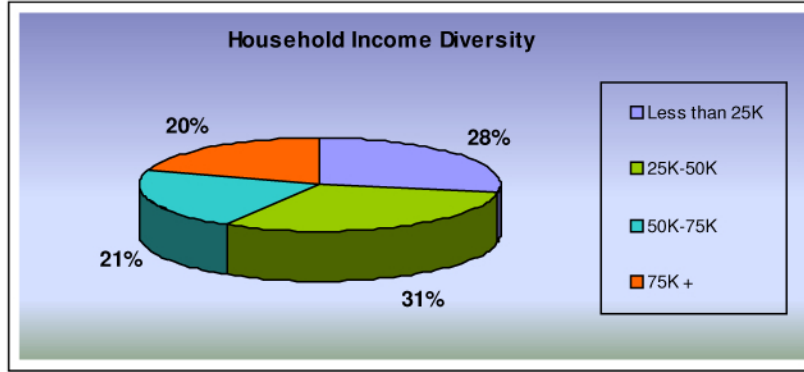
CTA Elevated Train Stops	0
Number of Bus Lines	8

Income and Buying Power

Concentrated Buying Power (\$/sq mile)	\$163,097,117
Conc. Middle Income Households (50-75K) /sq mil	1,950
Conc. Middle Upper Households (50K+) /sq mile	2,941

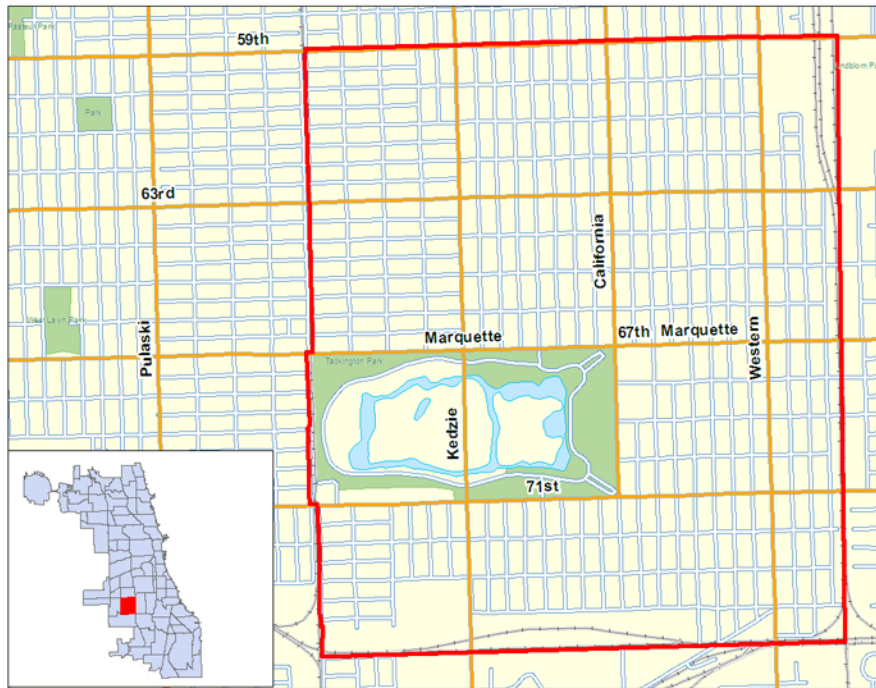
**All data is from 2010 unless otherwise noted.

Market Profile -- Chicago Lawn [66]



Retail Float

Food and Beverage Stores	\$27,895,518	Clothing and Clothing Accessories Stores	\$21,674,369
Food Service and Drinking Place	\$17,685,143	Furniture and Home Furnishing Stores	\$8,359,473
Health and Personal Care Store	\$18,174,866	Miscellaneous Store Retailers	\$10,402,224
General Merchandise Stores	\$50,486,524	Sporting Goods, Hobby, Book and Music Stores	\$9,453,470
Electronics and Appliances Stores	\$10,315,735	Building Material, Garden Equipment and Supply Dealers	\$36,656,727



LISC
MetroEDGE

1 N LaSalle St., Suite 1200, Chicago, IL 60602
Phone: 866-828-1599 Email: MetroEdge@lisc.org
<http://metroedge.lisc.org/>



CITY OF CHICAGO
DEPARTMENT OF COMMUNITY DEVELOPMENT
COMMISSIONER

Source: LISC MetroEdge calculations based on data from Claritas (2010), Chicago Association of Realtors, and City of Chicago Building Permits. The accuracy and completeness of the data herein is not guaranteed or warranted, and LISC MetroEdge is not making any express or implied representation or warranty about the fitness of the data and reports for any particular purpose.