

Market Profile -- Burnside [47]

Demographic Profile

Total Population in 2010	3,007	Total Households	886
Age: 0-17	942	African American	839
18-24	648	Asian	2
25-44	1,518	Hispanic	12
45-64	1,332	Caucasian	20
65+	316	Other	13
Total Population in 200	3,294	Average Household Size 2010	3.39
Population Density in 2010	4,850	Average Household Size 2000	3.43
Square Mileage	0.62	Family Households	726
		One Person Households	145

Real Estate

	Median Sale Price 2009	5 Year Price Change	10 Year Price Change	Number of Units Sold 2009
Single Family Detached	\$47,500	-45%	-34%	28
Single Family Attached	\$24,750	-69%		2

Market Scope

Occupied Housing Units 2010	886
Rented Housing Units	254
Owned Housing Units	632
Single Family Units 2010	952
Multi-Family Units 2010	31
Occupied Housing Units 2000	960
Rented Housing Units	321
Owned Housing Units	639
Median Household Income 2010	\$43,097
Median Household Income 2000	\$38,572

Real Estate Investment

Total New Purchase Loans (2009)	14
5-Year Loans Total (2005-2009)	269
Building Permits (2008)	# of Permits
New Construction Permits	12
Rehab Permits	12

Education

Some High School or less:	1,096
High School	1,100
Some College	946
Associate Degree	156
Bachelor's Degree	372
Master's Degree or higher	78

Workplace Population

Number of Employees, All Industries	844
Number of Businesses w/ 1-19 Employees	84
Number of Businesses w/ 20 or More Employees	9
Ratio of Workplace to Residential Population	28%

Transit Information

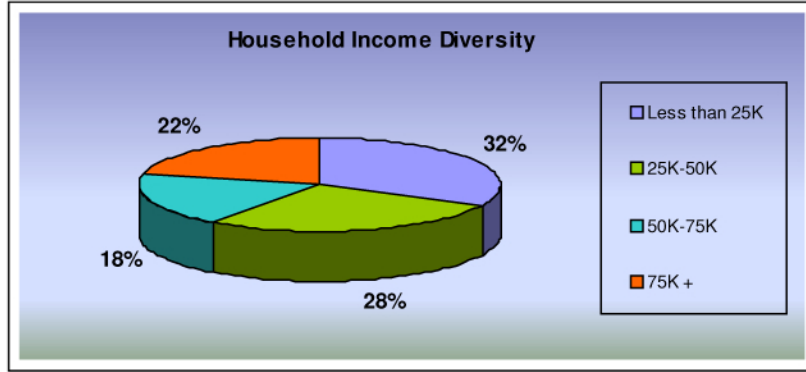
CTA Elevated Train Stops	0
Number of Bus Lines	7

Income and Buying Power

Concentrated Buying Power (\$/sq mile)	\$45,659,024
Conc. Middle Income Households (50-75K) /sq mil	505
Conc. Middle Upper Households (50K+) /sq mile	815

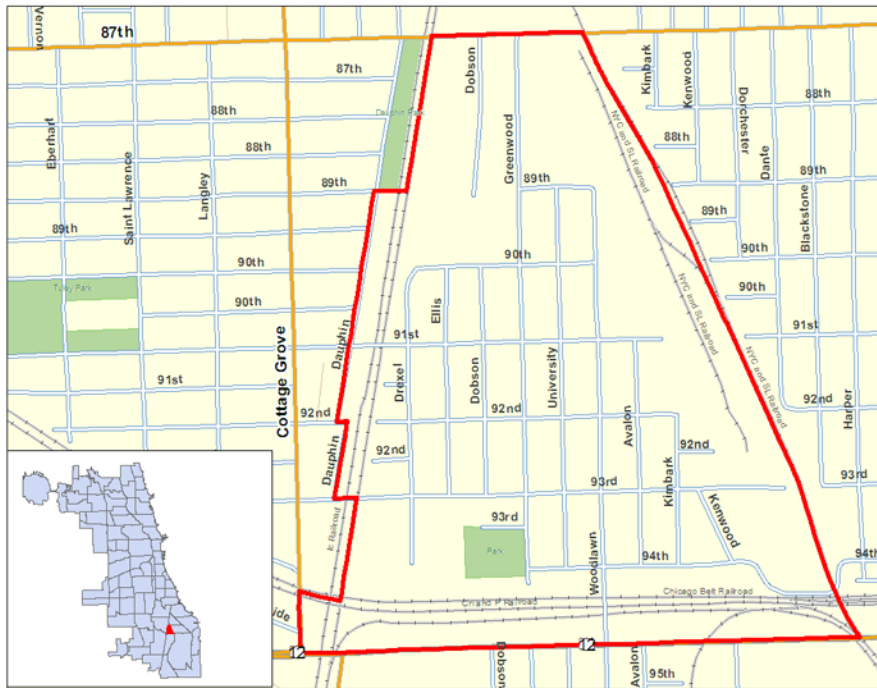
**All data is from 2010 unless otherwise noted.

Market Profile -- Burnside [47]



Retail Float

Food and Beverage Stores	\$4,007,483	Clothing and Clothing Accessories Stores	\$1,619,936
Food Service and Drinking Place	\$2,024,161	Furniture and Home Furnishing Stores	(\$2,032,133)
Health and Personal Care Store	\$1,452,037	Miscellaneous Store Retailers	\$672,564
General Merchandise Stores	\$4,502,057	Sporting Goods, Hobby, Book and Music Stores	\$548,413
Electronics and Appliances Stores	\$637,029	Building Material, Garden Equipment and Supply Dealers	\$317,640



1 N LaSalle St., Suite 1200, Chicago, IL 60602
 Phone: 866-828-1599 Email: MetroEdge@lisc.org
<http://metroedge.lisc.org/>



CITY OF CHICAGO
DEPARTMENT OF COMMUNITY DEVELOPMENT
COMMISSIONER

Source: LISC MetroEdge calculations based on data from Claritas (2010), Chicago Association of Realtors, and City of Chicago Building Permits. The accuracy and completeness of the data herein is not guaranteed or warranted, and LISC MetroEdge is not making any express or implied representation or warranty about the fitness of the data and reports for any particular purpose.