

Market Profile -- Brighton Park [58]

Demographic Profile

Total Population in 2010	44,206	Total Households	11,942
Age: 0-17	14,474	African American	68
18-24	10,284	Asian	346
25-44	27,152	Hispanic	8,976
45-64	16,188	Caucasian	2,398
65+	2,920	Other	154
Total Population in 200	44,912	Average Household Size 2010	3.69
Population Density in 2010	16,252	Average Household Size 2000	3.59
Square Mileage	2.72	Family Households	9,354
		One Person Households	2,104

Real Estate

	Median Sale Price 2009	5 Year Price Change	10 Year Price Change	Number of Units Sold 2009
Single Family Detached	\$102,499	-45%	4%	52
Single Family Attached	\$222,500			2

Market Scope

Occupied Housing Units 2010	11,942
Rented Housing Units	5,226
Owned Housing Units	6,716
Single Family Units 2010	9,814
Multi-Family Units 2010	492
Occupied Housing Units 2000	12,465
Rented Housing Units	6,095
Owned Housing Units	6,370
Median Household Income 2010	\$43,768
Median Household Income 2000	\$36,739

Real Estate Investment

Total New Purchase Loans (2009)	94
5-Year Loans Total (2005-2009)	1,739
Building Permits (2008)	# of Permits
New Construction Permits	23
Rehab Permits	51

Education

Some High School or less:	26,156
High School	12,942
Some College	5,496
Associate Degree	1,444
Bachelor's Degree	2,316
Master's Degree or higher	1,084

Workplace Population

Number of Employees, All Industries	6,051
Number of Businesses w/ 1-19 Employees	630
Number of Businesses w/ 20 or More Employees	57
Ratio of Workplace to Residential Population	14%

Transit Information

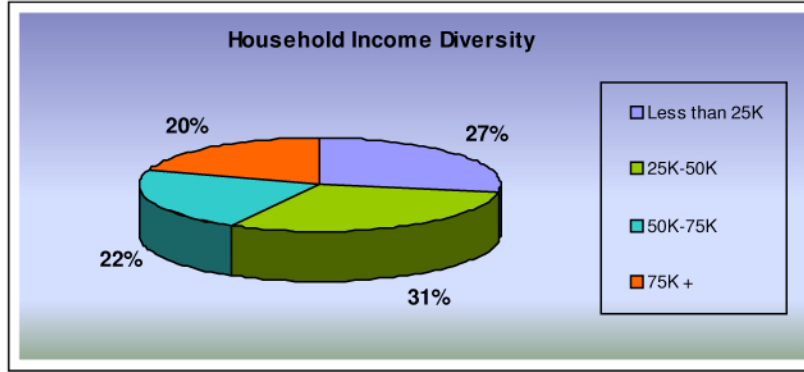
CTA Elevated Train Stops	0
Number of Bus Lines	10

Income and Buying Power

Concentrated Buying Power (\$/sq mile)	\$149,955,018
Conc. Middle Income Households (50-75K) /sq mil	1,770
Conc. Middle Upper Households (50K+) /sq mile	2,638

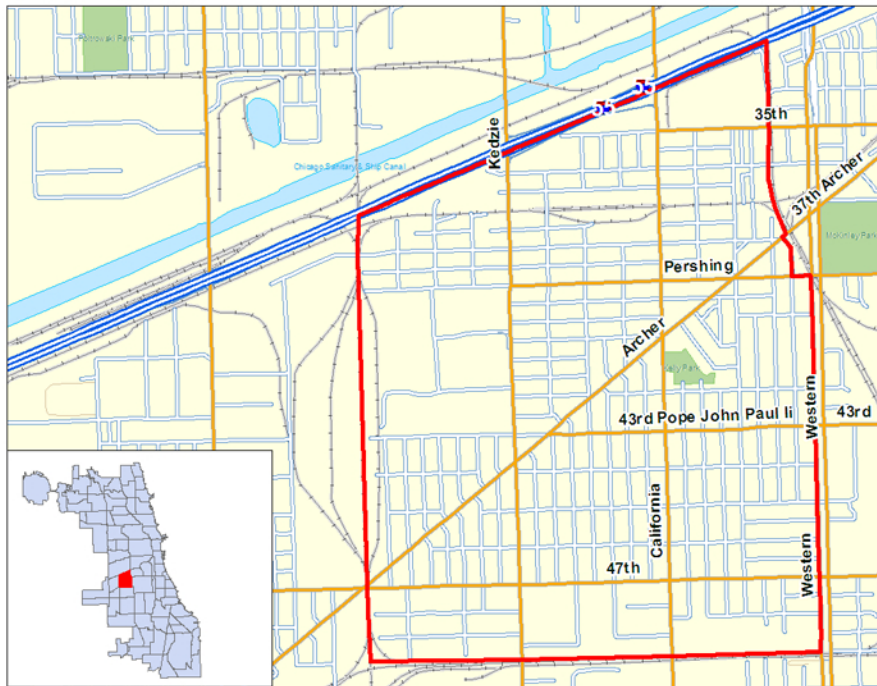
**All data is from 2010 unless otherwise noted.

Market Profile -- Brighton Park [58]



Retail Float

Food and Beverage Stores	\$34,270,423	Clothing and Clothing Accessories Stores	\$11,670,664
Food Service and Drinking Place	\$19,220,837	Furniture and Home Furnishing Stores	(\$1,134,164)
Health and Personal Care Store	\$21,244,149	Miscellaneous Store Retailers	\$5,419,048
General Merchandise Stores	\$55,431,583	Sporting Goods, Hobby, Book and Music Stores	\$7,009,826
Electronics and Appliances Stores	\$7,718,325	Building Material, Garden Equipment and Supply Dealers	\$23,946,371



LISC
MetroEDGE

1 N LaSalle St., Suite 1200, Chicago, IL 60602
Phone: 866-828-1599 Email: MetroEdge@lisc.org
<http://metroedge.lisc.org/>



CITY OF CHICAGO
DEPARTMENT OF COMMUNITY DEVELOPMENT
COMMISSIONER

Source: LISC MetroEdge calculations based on data from Claritas (2010), Chicago Association of Realtors, and City of Chicago Building Permits. The accuracy and completeness of the data herein is not guaranteed or warranted, and LISC MetroEdge is not making any express or implied representation or warranty about the fitness of the data and reports for any particular purpose.