

# Market Profile -- Archer Heights [57]

## Demographic Profile

Total Population in 2010	13,761	Total Households	4,242
Age: 0-17	3,813	African American	21
18-24	2,669	Asian	17
25-44	8,710	Hispanic	2,189
45-64	6,137	Caucasian	1,934
65+	1,598	Other	81
Total Population in 200	13,700	Average Household Size 2010	3.24
Population Density in 2010	6,915	Average Household Size 2000	3.16
Square Mileage	1.99	Family Households	3,113
		One Person Households	950

## Real Estate

	Median Sale Price 2009	5 Year Price Change	10 Year Price Change	Number of Units Sold 2009
Single Family Detached	\$155,000	-31%	24%	51
Single Family Attached	\$0	-100%		0

## Market Scope

Occupied Housing Units 2010	4,242
Rented Housing Units	1,349
Owned Housing Units	2,893
Single Family Units 2010	3,541
Multi-Family Units 2010	284
Occupied Housing Units 2000	4,337
Rented Housing Units	1,552
Owned Housing Units	2,785
Median Household Income 2010	\$46,053
Median Household Income 2000	\$42,000

## Real Estate Investment

Total New Purchase Loans (2009)	90
5-Year Loans Total (2005-2009)	936
Building Permits (2008)	# of Permits
New Construction Permits	5
Rehab Permits	33

## Education

Some High School or less:	7,262
High School	5,865
Some College	2,936
Associate Degree	510
Bachelor's Degree	942
Master's Degree or higher	559

## Workplace Population

Number of Employees, All Industries	9,503
Number of Businesses w/ 1-19 Employees	376
Number of Businesses w/ 20 or More Employees	78
Ratio of Workplace to Residential Population	69%

## Transit Information

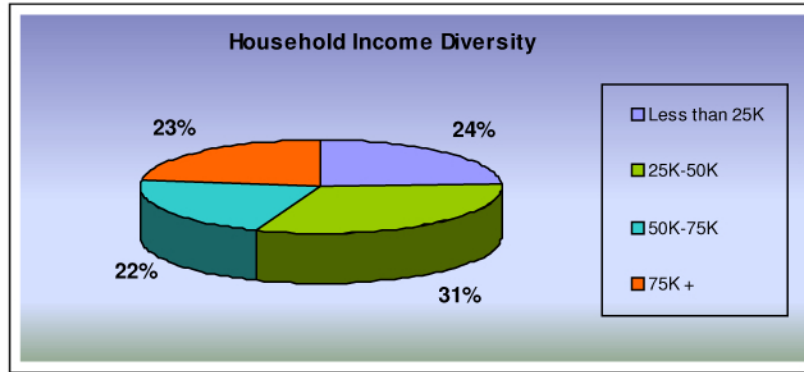
CTA Elevated Train Stops	0
Number of Bus Lines	4

## Income and Buying Power

Concentrated Buying Power (\$/sq mile)	\$74,420,360
Conc. Middle Income Households (50-75K) /sq mil	857
Conc. Middle Upper Households (50K+) /sq mile	1,341

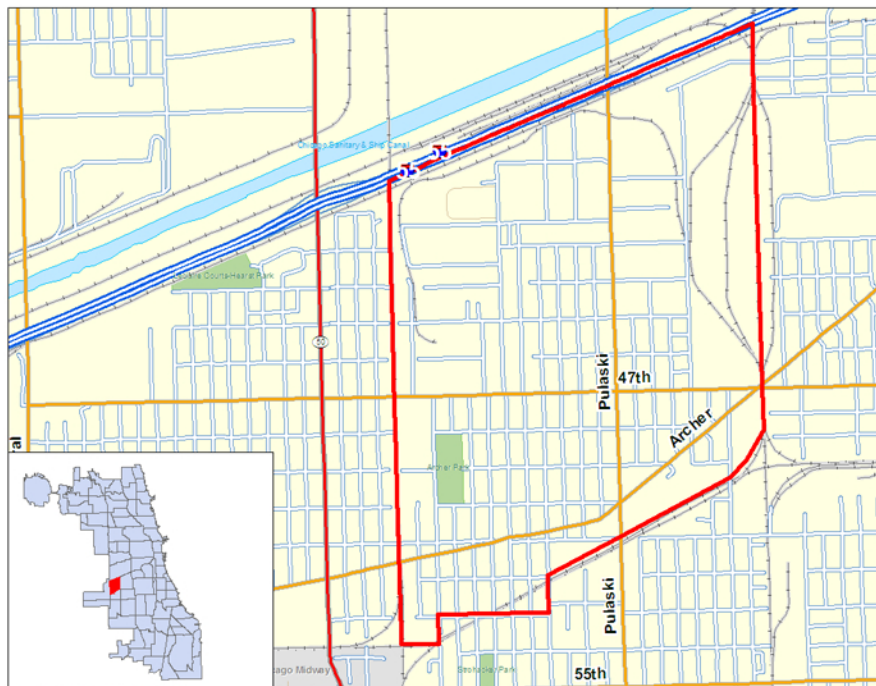
\*\*All data is from 2010 unless otherwise noted.

# Market Profile -- Archer Heights [57]



## Retail Float

Food and Beverage Stores	\$1,346,148	Clothing and Clothing Accessories Stores	\$3,710,708
Food Service and Drinking Place	(\$1,884,877)	Furniture and Home Furnishing Stores	(\$18,226,824)
Health and Personal Care Store	\$6,473,787	Miscellaneous Store Retailers	\$1,078,193
General Merchandise Stores	(\$8,209,967)	Sporting Goods, Hobby, Book and Music Stores	(\$3,667,852)
Electronics and Appliances Stores	\$2,895,355	Building Material, Garden Equipment and Supply Dealers	(\$2,734,977)



**LISC**  
MetroEDGE

1 N LaSalle St., Suite 1200, Chicago, IL 60602  
Phone: 866-828-1599 Email: MetroEdge@lisc.org  
<http://metroedge.lisc.org/>



**CITY OF CHICAGO**  
**DEPARTMENT OF COMMUNITY DEVELOPMENT**  
**COMMISSIONER**

Source: LISC MetroEdge calculations based on data from Claritas (2010), Chicago Association of Realtors, and City of Chicago Building Permits. The accuracy and completeness of the data herein is not guaranteed or warranted, and LISC MetroEdge is not making any express or implied representation or warranty about the fitness of the data and reports for any particular purpose.